

DIGITAL TRANSFORMATION
STRATEGY SERIES: PART 1

TREASURY PARADIGM SHIFT



BRETT TURNER

Founder & CEO, Trovata

CRAIG JEFFERY

Founder & Managing Partner, Strategic Treasurer



WHAT

Understanding key factors impacting treasury and the developing trends in an era of big data and modern technology.



WHEN

Tuesday, August 3, 2021
2:00 – 3:00 PM Eastern



WHERE

Live online presentation
Replays at StrategicTreasurer.com



This presentation is provided by Strategic Treasurer and Trovata

ABOUT THE SPEAKERS

GET TO KNOW TODAY'S SUBJECT MATTER EXPERTS



BRETT TURNER

Brett Turner, Founder & CEO of Trovata, has spent his entire career in finance at both public and private high-growth companies – CPA at Deloitte; Controller roles; SEC Reporting at Amazon; and CFO of three tech startups since 2005. At each stop along the journey, cash & reporting have always been a major focus. In addition, he had a front row seat to the transformation of enterprise IT by AWS as a co-founder in his last startup.



CRAIG JEFFERY

Craig Jeffery formed Strategic Treasurer in 2004 to provide corporate, educational and government entities direct access to comprehensive and current assistance with their treasury and financial process needs.

His 30+ years of financial and treasury experience as a practitioner and as a consultant have uniquely qualified him to help organizations craft realistic goals and achieve significant benefits quickly.

TOPICS OF DISCUSSION

KEY AREAS OF FOCUS & ANALYSIS



TREASURY LANDSCAPE

TECH IS CHANGING



MODERNIZATION

WHEN IS THE RIGHT TIME



OUTLOOK

LOOKING AHEAD TO 5+ YEARS



THE TECH STACK

UTILIZING NEW TECHNOLOGY



SELF EVALUATION

LOOKING AT YOUR CURRENT AND FUTURE NEEDS



KEY TAKEAWAYS

AND FINAL THOUGHTS

UNDERSTANDING THE NEW LANDSCAPE

TREASURY TECH IS CHANGING



Data Explosion



40-50% Compound Annual Growth Rate



Processing Speed/Cost



Doubling Every 18-24 Months



Cost of Data Movement



Massive to Minimal



Hard to Access Data



Easy to Access



Lag Data



Real-Time Data

FORMAT & CONNECTION

EVOLUTION



- Costly data transmission >>> Inexpensive high-speed data transmission
- One-way >>> Two-way, confirmation
- Limited information >>> Data rich
- Matrix structured storage >>> Complex data sets with massive storage capabilities



FILE-BASED



SPARTAN/
DELIMITED



REAL-TIME



API



*THE NEXT
BIG THING*

BANK APIs

THE NEW FUEL

40-Yr Timeline of File-Based Bank Data Transmission



API Era in Wholesale Banking is Here

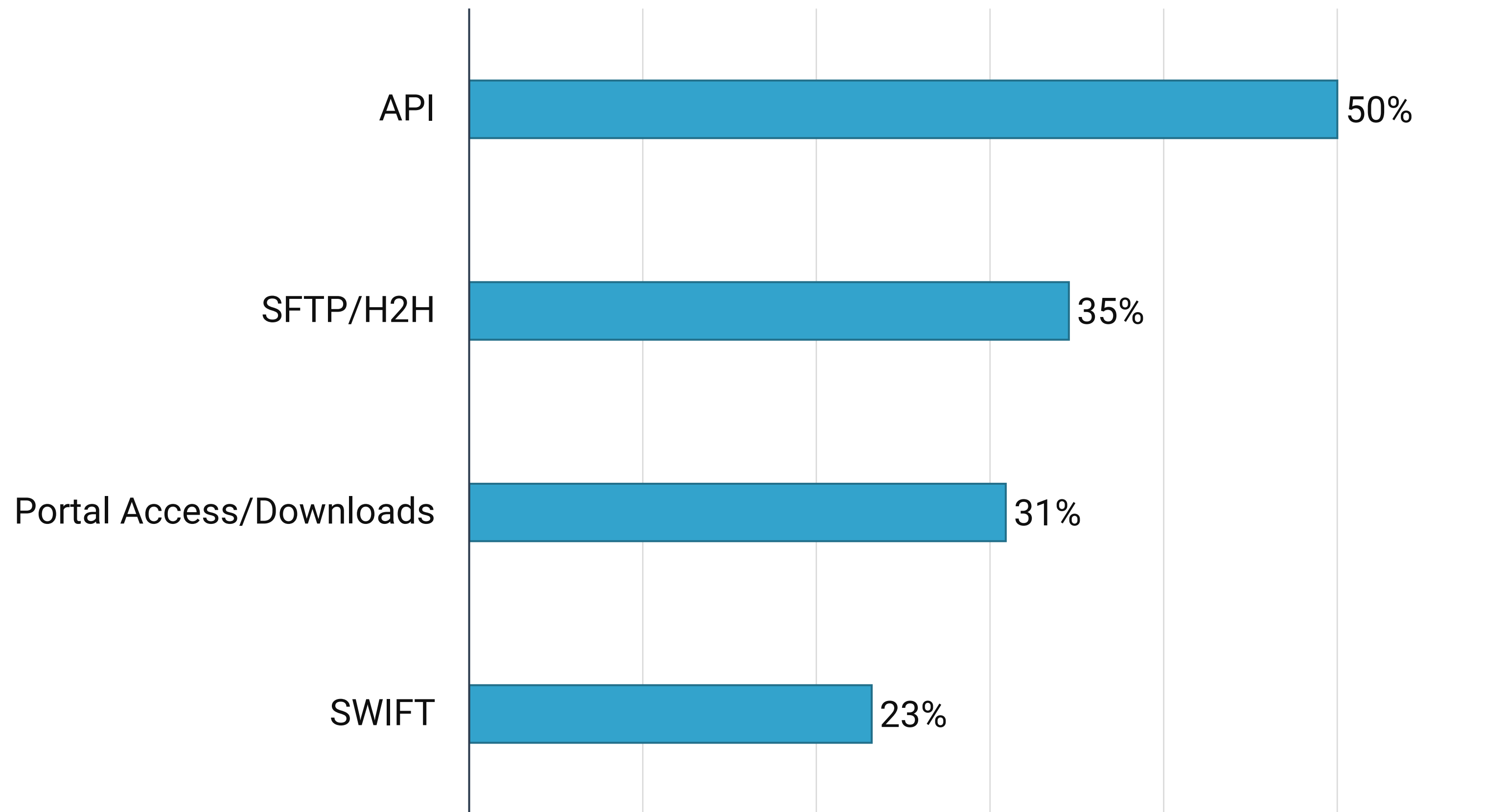
Reserved for Large Corporate Treasury
(Global 5000)

Legacy Treasury Workstation Era

**Democratizing
bank data for
the broader
market
globally**

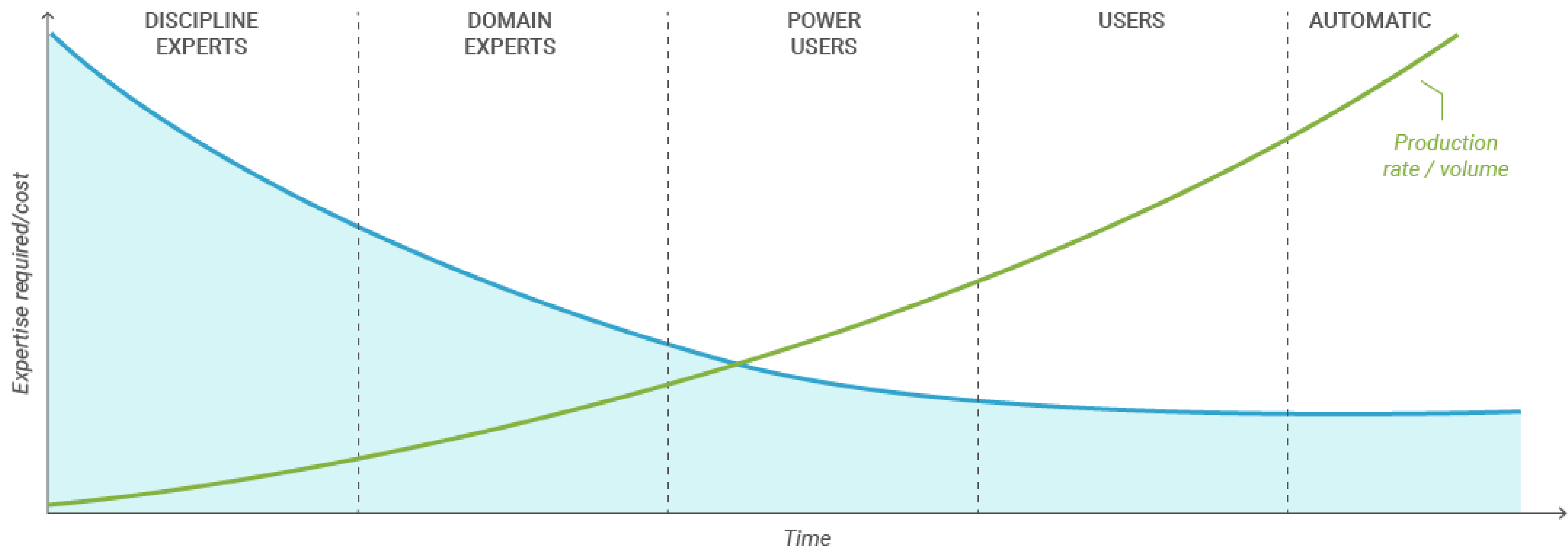
POLL QUESTION

For NEW connections for information reporting, we would prefer the following method(s):



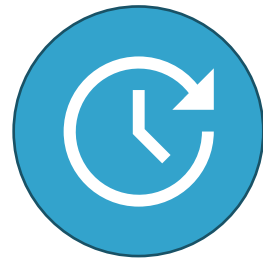
FROM HEAVY OVERHEAD TO DEMOCRATIZATION

Systems once only available to the largest operations are now available to the masses.



WHY MODERNIZE?

NOW IS THE TIME



FUTURE PROOF



MARKET GROWTH EXPECTATIONS



EFFICIENCY



SECURITY FRAUD PROTECTION



COST SAVINGS

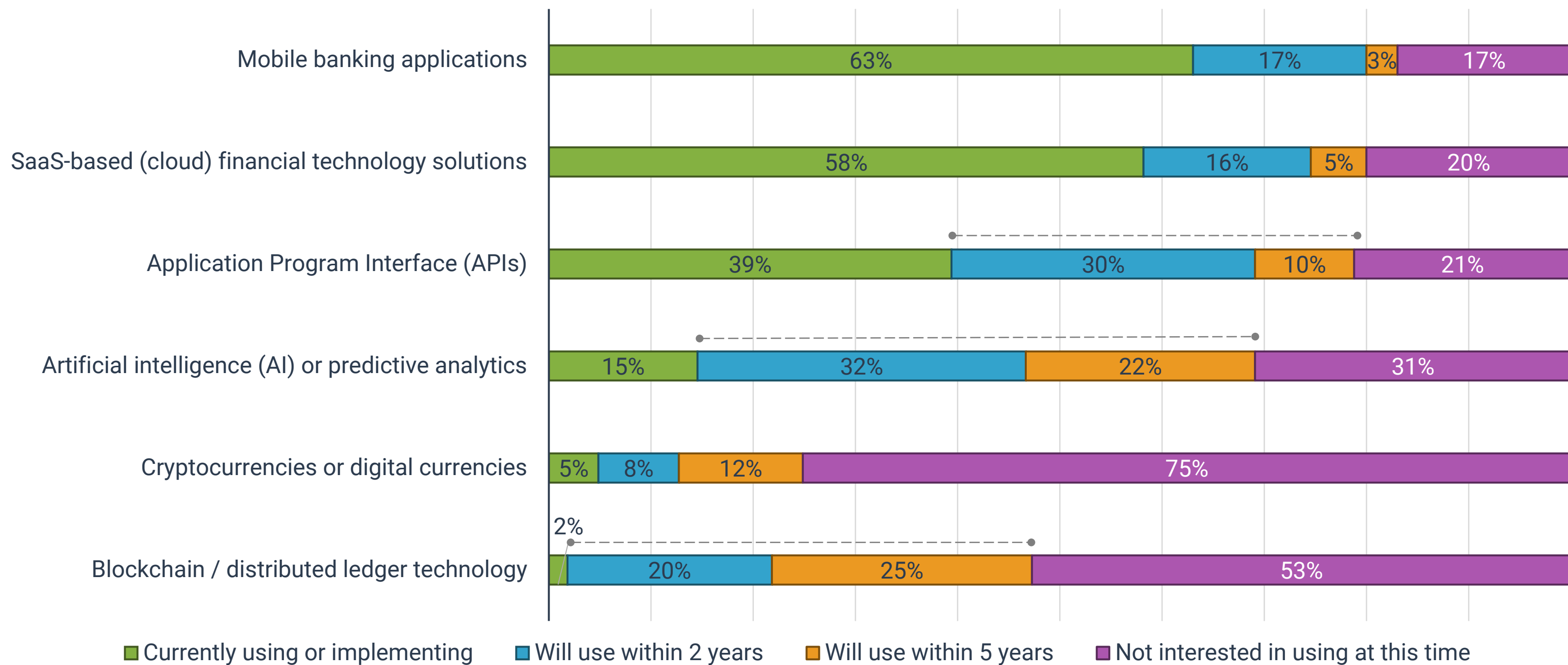


WORK ANYWHERE

5-YEAR HORIZON

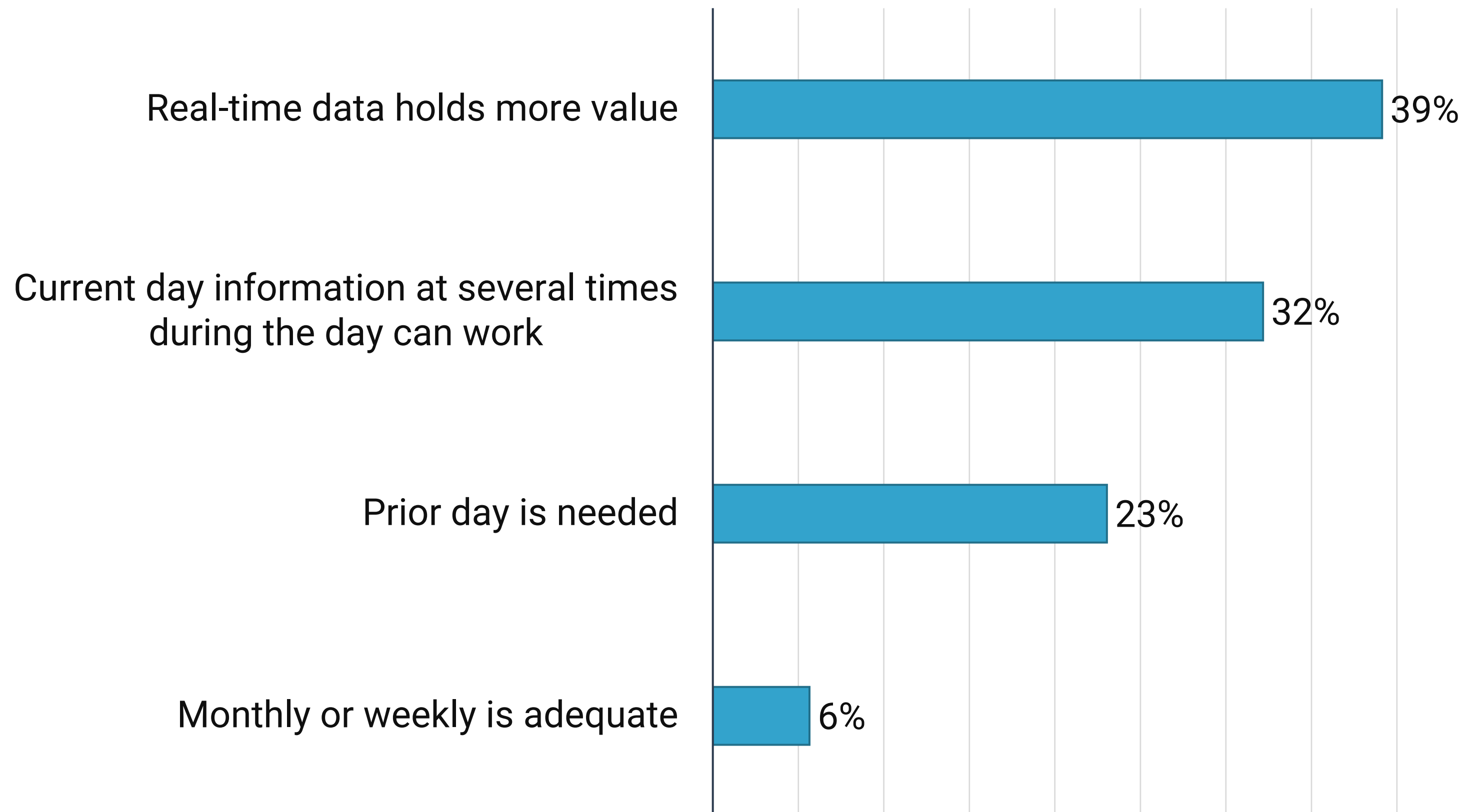
MAJOR INCREASES IN AREAS

» Which of the following technologies are you using / interested in using in treasury?



POLL QUESTION

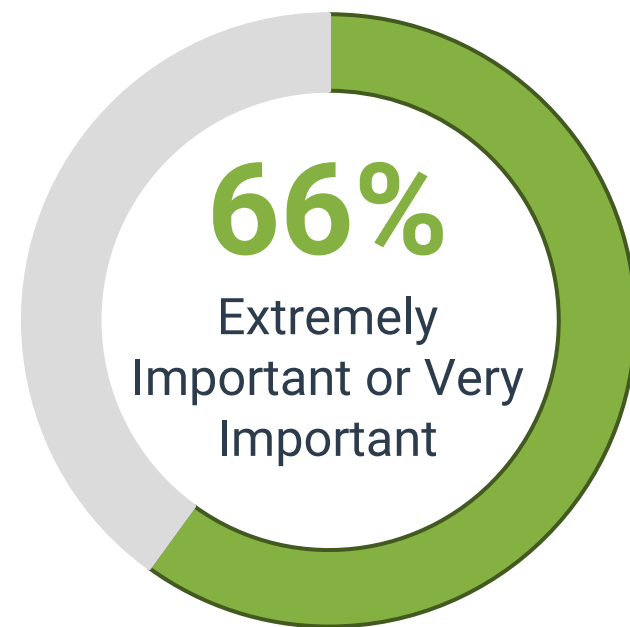
Identify your 2022 expectations for speed with treasury information:



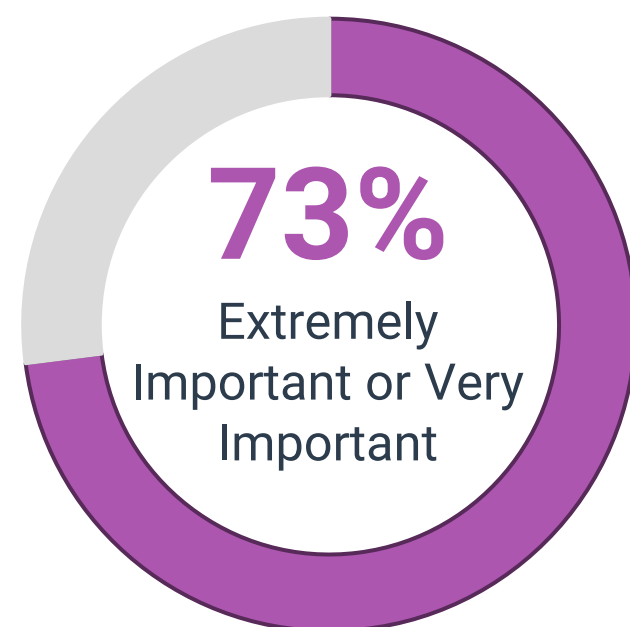
API IMPORTANCE

TOP PRIORITY

Importance that TMS/TRMS uses a platform that allows APIs for connectivity



Importance that my banks support APIs for connectivity (information reporting, payment)



Top product development priorities for corporates this year:



Bank connectivity/system integration



Faster and more integrated AP/AR capabilities



Cyber and fraud security protections



Treasury management systems and/or ERP



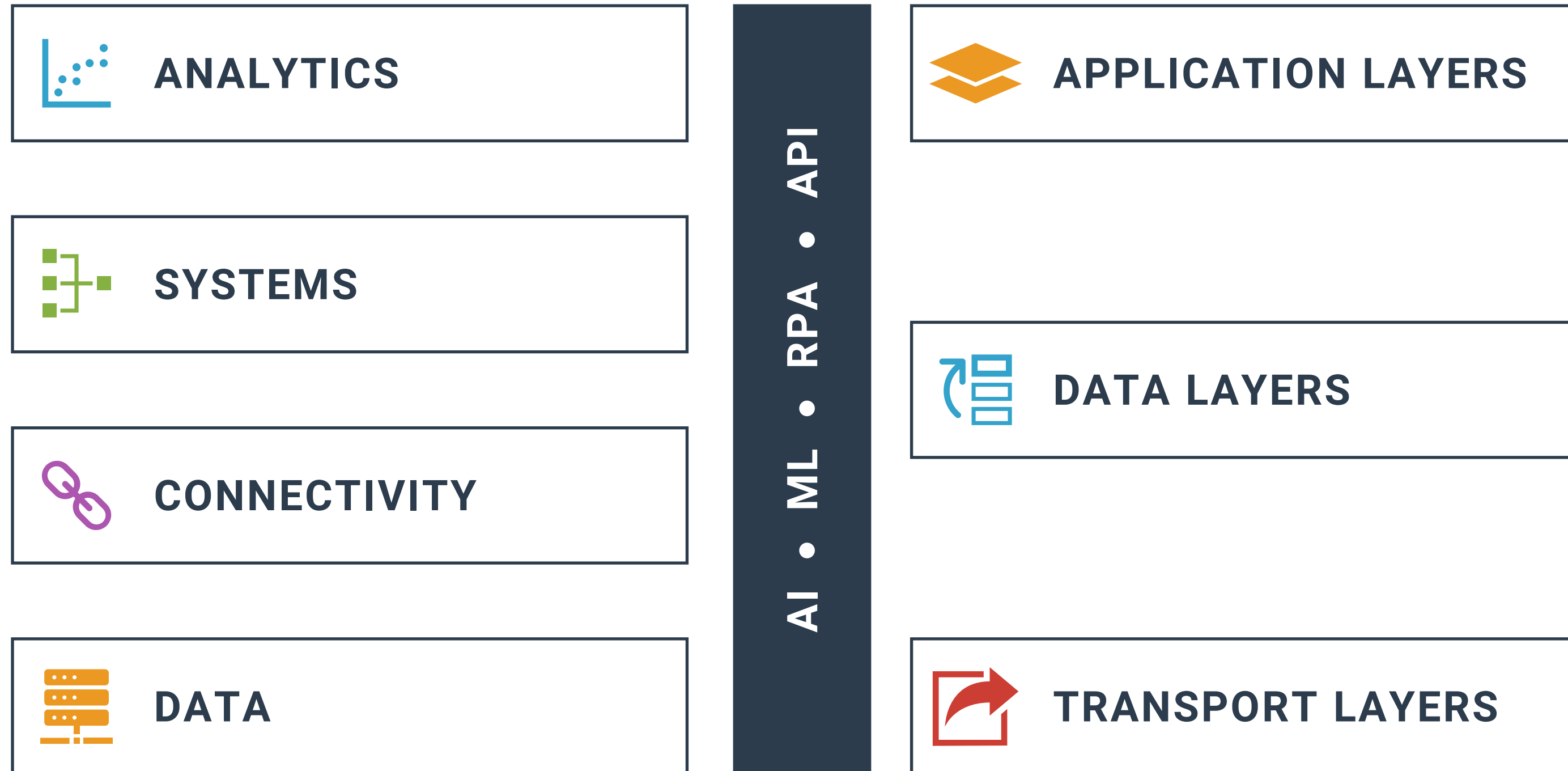
Cash forecasting tools



Artificial intelligence and bots

TECH STACK

DECREASE TIME TO VALUE



- Modern UX
- Time to value

- Microservices Architecture
- Dynamic pipe

- Meta data in real-time
- Native cloud vs. hosted

BIG DATA PLATFORM

CLOUD NATIVE

 Treasury connects to multiple worlds: inside the company and with the outside.



FUNCTIONAL

- Cash forecasting
- Cash positioning
- Reporting
- Fund transfers
- Cash accounting
- Bank account mgmt.
- Debt management



USER EXPERIENCE

- Dynamic Indexing
- Rapid retrieval
- Storage
- Natural language search
- Anomaly detection
- Alert notification
- AI/ML

POLL QUESTION

Big data and cloud-native treasury means the following to me:



WHAT DOES TREASURY NEED TO DO?

PERSPECTIVE



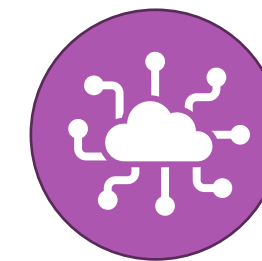
Have a plan to manage and optimize your **data**.



Consider what is required to **future proof** your investments.



Connectivity and formats have changed dramatically in the past 5 years. How are you **adapting**?



Is your team's view of modern tech (cloud/API/AI - ML) changing with the **reality**?

FINAL THOUGHTS

IDEAS AND POINTS TO BRING BACK TO THE OFFICE



KNOW THE CONTEXT OF DATA CHANGES

Scope of
change

Opportunity of
the explosion



API USE: A CONCEPT VS. AS A SERVICE

Understanding the
use of APIs

Optimizing the use
of APIs



ENABLED FOR CLOUD OR CLOUD NATIVE

How will this
matter? For
finance and
treasury

Navigating
changes in
technology



WHAT REQUIRES ADAPTATION

Technology

Mindset

DIGITAL TRANSFORMATION STRATEGY SERIES

1 Treasury Paradigm Shift

Navigating the New Tech Landscape

2 Visibility and data connectivity are crucial to staying afloat in today's climate. How implementing technology can empower the treasury team.
August 18 at 2pm EDT

Partnering with IT on Your Digital Transformation

3 Leveraging IT's resources to become a strategic catalyst in digital transformation.
September 14 at 2pm EDT

Evaluating Tech Solution Sets

4 A holistic evaluation of today's choices to find a solution that fits your needs.
October 13 at 2pm EDT

LET'S CONNECT.

DON'T LET THE LEARNING END HERE...
CONTACT US WITH ANY FUTURE QUESTIONS.

Thank you for your interest in this presentation and for allowing us to support you in your professional development. Strategic Treasurer and our partners believe in the value of continued education and are committed to providing quality resources that keep you well informed.



STRATEGIC TREASURER

Craig A. Jeffery,
Managing Partner

✉ craig@strategictreasurer.com

🎧 [The Treasury Update Podcast](#)

📄 [linkedin.com/in/strategictreasurer/](https://www.linkedin.com/in/strategictreasurer/)



TROVATA

Brett Turner
Founder & CEO

📄 [linkedin.com/company/trovata-io/](https://www.linkedin.com/company/trovata-io/)

🏠 [trovata.io](https://www.trovata.io)



DIGITAL TRANSFORMATION
STRATEGY WEBINAR SERIES:  

Navigating the New Tech Landscape

 **JOSEPH
DRAMBAREAN** + **CRAIG
JEFFERY**
Trovata Strategic Treasurer

 **AUG 18**
2 PM EDT

Please Join for the Next Webinar in the Series! August 18 at 2pm EDT

Visibility, data connectivity and forecasting are crucial to staying afloat in today's climate, and leveraging new technology is becoming more and more crucial to achieving those goals. From RPA to AI and ML, the alphabet soup is confusing but increasingly important to treasury's daily life. Learn the fundamentals of these technologies and how they can empower your treasury team to unlock efficiency and access accurate information.



Register for Part 2