

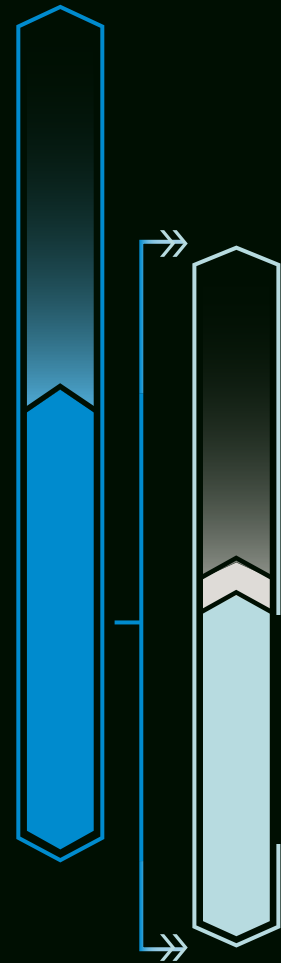


Still Glued Down to Paper



LOCKBOX SERVICES

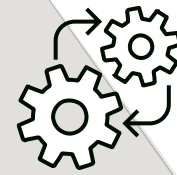
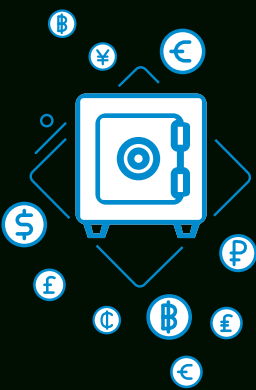
55% of corporates currently use a commercial lockbox



5% are using a third party directly



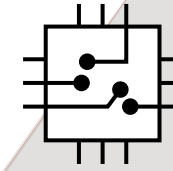
Half of all corporations (49%) use lockbox services through a bank provider



WHICH PATH TO TAKE?



Most firms (77%) are either highly automated or on the move towards it



For AR we consider ourselves to be:



MANUAL OR PREDOMINANTLY MANUAL: 23%



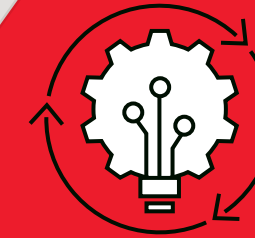
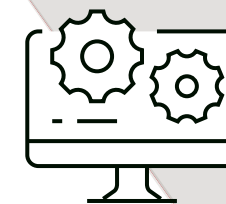
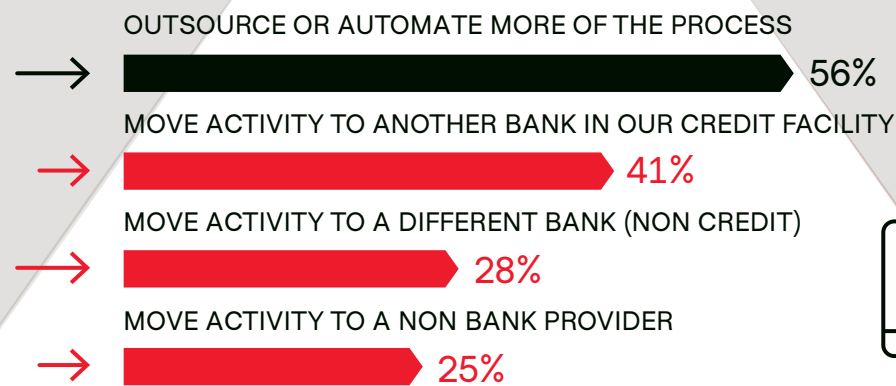
MIXED, MANUAL AND AUTOMATED: 48%



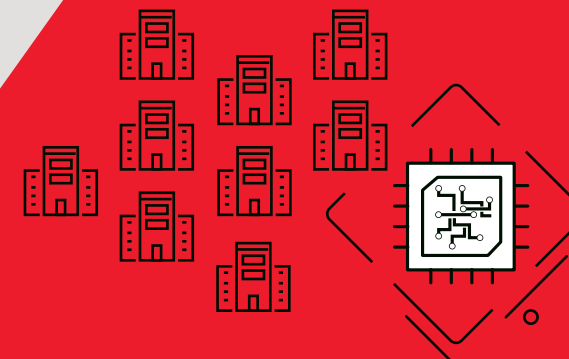
HIGHLY AUTOMATED: 29%

Organizations are willing to go to great lengths to move to full electronic processing.

This includes willingness to:



Wants to Be Fully Electronic



Nine times (9x) as many organizations view moving to full electronic processing as important vs. those who do not



IMPORTANCE OF FULLY ELECTRONIC

